



piessepi
TECNOLOGIE ELETTRICHE

Switchboards

MV an LV Switchboards and Plants

THE POWER OF ENERGY

The Piessepi made significant experiences in M.V. an L.V. Switchgears assembling and Plants Installation. Main activities are the distribution and control switchgears manufacturing , testing and installation; the relevant electrical engineering is also developed and managed.

- Medium voltage standard boards (3 Kv 36 Kv)
- Pre-assembled MV boards, modular units type
- Pre-assembled LV boards, modular units type
- Motor control center
- Control, management and supervision synoptic boards
- Industrial automation and process boards AUTOMATION
- PLC and PC employment for machineries and production processes automation
- Process data acquisition and processing
- Modules and equipment for precise aims
- Continuous batching units on web or loss or weight, weighing and batching system

Program the activation of home appliances in times when energy consumption is most economical, it allows a conscious use of resources.

Our technology solution

Siemens, Bticino, Schneider Electric, ABB Sace

piessepi.org



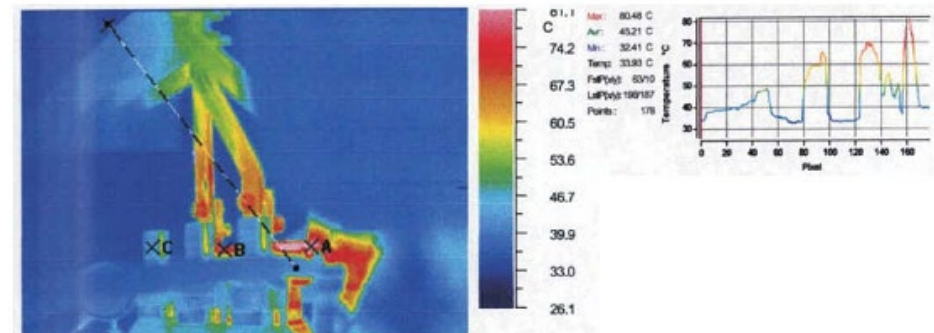
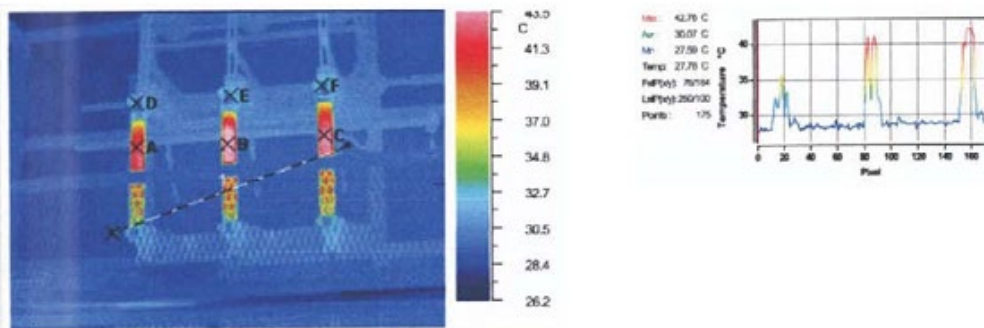
piessepi
TECNOLOGIE ELETTRICHE

THERMOGRAPHIC ANALYSIS

Thermographic analysis on components and equipment to focus possible critical points advising warning signs for dangerous and deterioration situations.

This service is performed while equipment is working, controlling power circuits, indicating possible failures to be solved, and inspection reporting by highlighting the occurred failures and related suggested solutions.

- Energy analysis to optimize energy and supply contracts management in a free or restricted trade
- Measures of earth resistance, pitch and contact voltage, continuity, impedances, and so on
- Measures inside medical rooms
- Analysis of electrical lines (harmonic measures, loads, cosyi, and so on)
- Chemical analysis
- Measures of electromagnetic pollutions



Classe di difetto		
<input type="checkbox"/>	dT > 35 °C	(1) Necessita intervento immediato
<input checked="" type="checkbox"/>	dT > 10 °C < 35 °C	(2) Da tenere sotto controllo
<input type="checkbox"/>	dT > 5 °C < 10 °C	(3) Ricontrollare alla prossima ispezione termografica

Classe di difetto		
<input checked="" type="checkbox"/>	dT > 35 °C	(1) Necessita intervento immediato
<input type="checkbox"/>	dT > 10 °C < 35 °C	(2) Da tenere sotto controllo
<input type="checkbox"/>	dT > 5 °C < 10 °C	(3) Ricontrollare alla prossima ispezione termografica



SIEMENS
SIVACON

SIEMENS
SIVACON

SIEMENS
SIVACON

SIEMENS
SIVACON

SIEMENS
SIVACON





piessepi

TECNOLOGIE ELETTRICHE

Piessepi Srl

info@piessepi.org
www.piessepi.org

Sede Legale

Via Varesina, 52
21040 Jerago con Orago (VA) - Italia
Tel. +39 0332 458766

Sede Operativa

Via Donizetti, 17/B - 21020 Buguggiate (VA) - Italia
Via Nervesa, 4 - 20139 Milano (MI) - Italia
Tel. +39 0332 458766